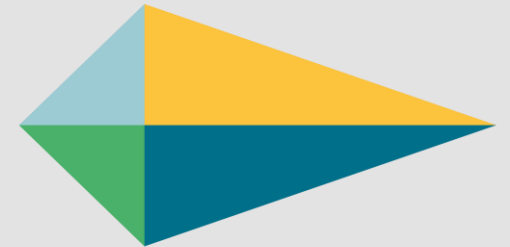


Opportunities to Increase Planning Income & Delivery Efficiency

Philip Ridley

Head of Planning & Coastal Management

01 May 2019



EASTSUFFOLK
COUNCIL

The East Suffolk Context

- Re-organisation
- Growth
- Infrastructure
- Demographics
- Population of 250,000
- Covers 487sq miles

Growth in East Suffolk

- It has an economic agenda focused on tourism/culture, energy, agriculture, technology, ports and logistics
- It has a diverse range of businesses
 - The Port of Felixstowe
 - BT Adastral Park
 - Sizewell Nuclear Power
 - Offshore wind; connection and maintenance
 - CEFAS
 - 9,000 micro businesses and SME's
- The 2017 forecast for the total Gross Value Added for the East Suffolk area is £4.3bn



East Suffolk a lot on the horizon



- Energy sector
- Sizewell
- Lowestoft Third Crossing - cost £91.7m
- Lowestoft South Beach Vision
- Ipswich Northern Relief Road - cost £250-400m – A14 resilience
- Area Action Plans
- Leisure development programme
- Local Plans – deliver 21,000 homes by 2036

East Suffolk a lot on the horizon

- Lowestoft flood protection scheme - £35m shortfall due to impact of offshore wind
- £20m investment in CEFAS
- Adastral Park -2,000 homes + allows BT to invest and deliver high value jobs
- A12 'SEGWAY' / 4 villages bypass
- Port of Felixstowe – 130 hectare logistics allocation to sustain competitive edge



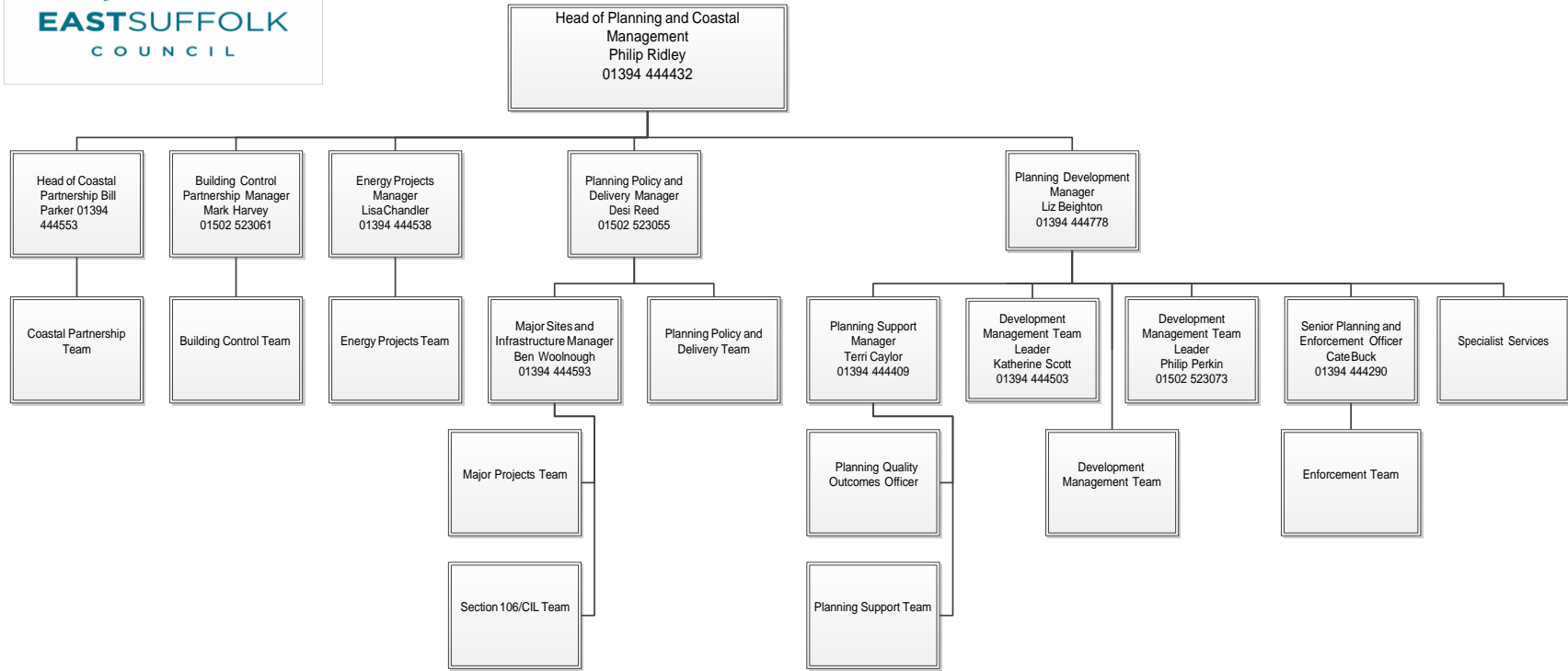
Planning to lead....

- Planning must be at the Top Table – support RTPI's campaign
- Ensure resourced to meet demands – lack of Planners/others
- Proactively manage Plan delivery
- Positively engage developers and communities
- East Suffolk invested in additional resource to meet demands
- Additional £350k /annum in staff (inc on costs) – more to come

East Suffolk Planning Structure



Management Team Structural Chart
2019



Funding

- Planning fee increase – c£300k/annum
- CIL admin – 5% of receipts (rising significantly)
- PPA's and Pre- App Charging - increasing

- Leadership from the top co-ordinated with County, LEP and others?
- But there are Recruitment difficulties – 4 vacancies
- Grow your own
- Share and learn from best practice

Fenland

- Reflections on the Fenland Peer Review

Finally ...

- Any Questions ?