

**Linda Haysey**  
**East Herts Council leader**

# Our experience

Producing a Local Plan is a tough process politically - for communities, residents and councils - and still not over!

It costs a lot: average £350,000 per authority per year

Legislation, policy and the numbers keep changing

Significant infrastructure implications

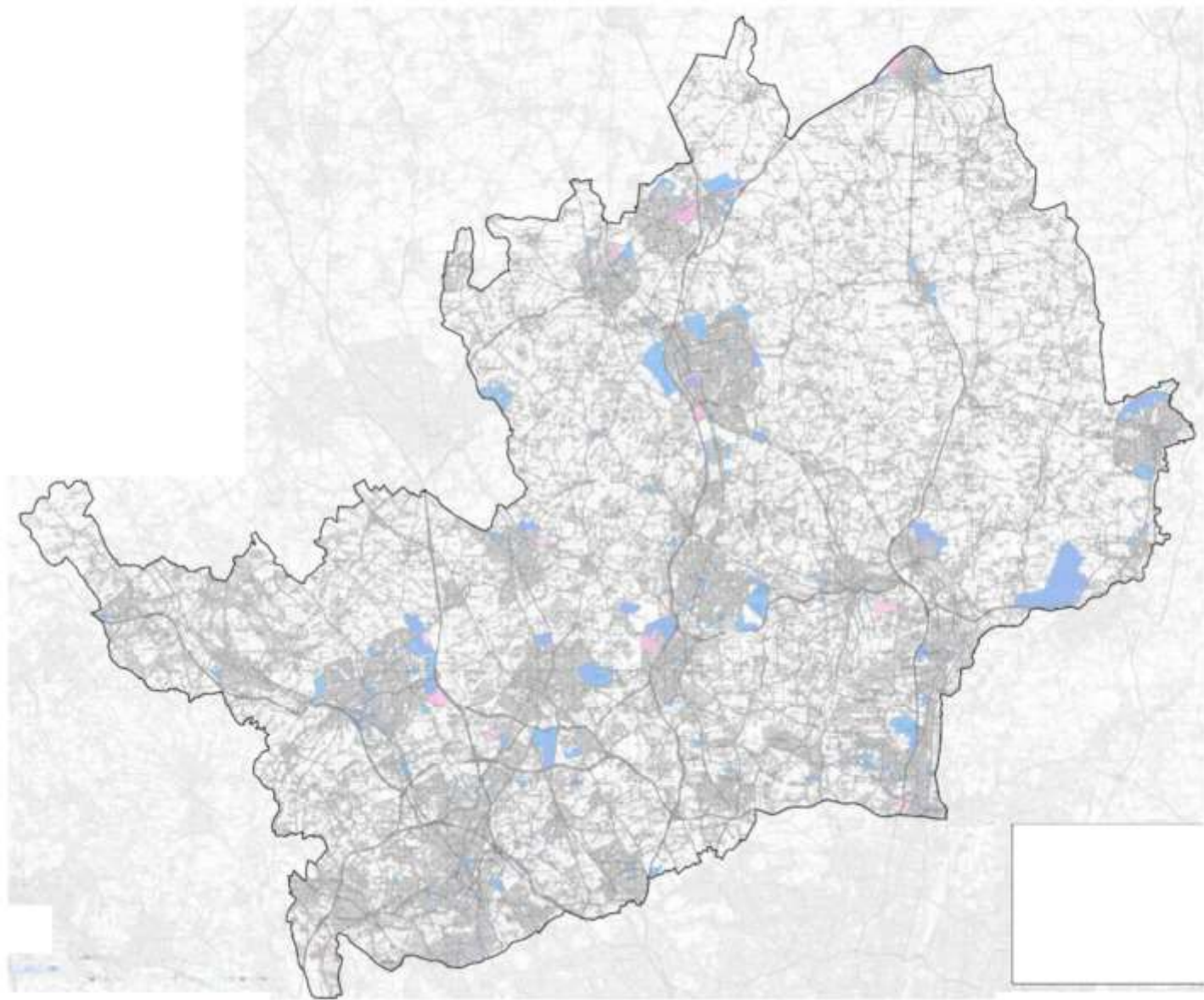
Loss of greenfield and green belt

Higher densities

Viability and affordability challenges

Developer and landowner challenges

If this time around was difficult... where next?



# Joint working options

General engagement

HPG and HIPP

Duty to co-operate

Joint site masterplans

Joint planning documents

Joint planning teams

Joint local plans

Joint committees

Combined  
authorities

What's in it for me?

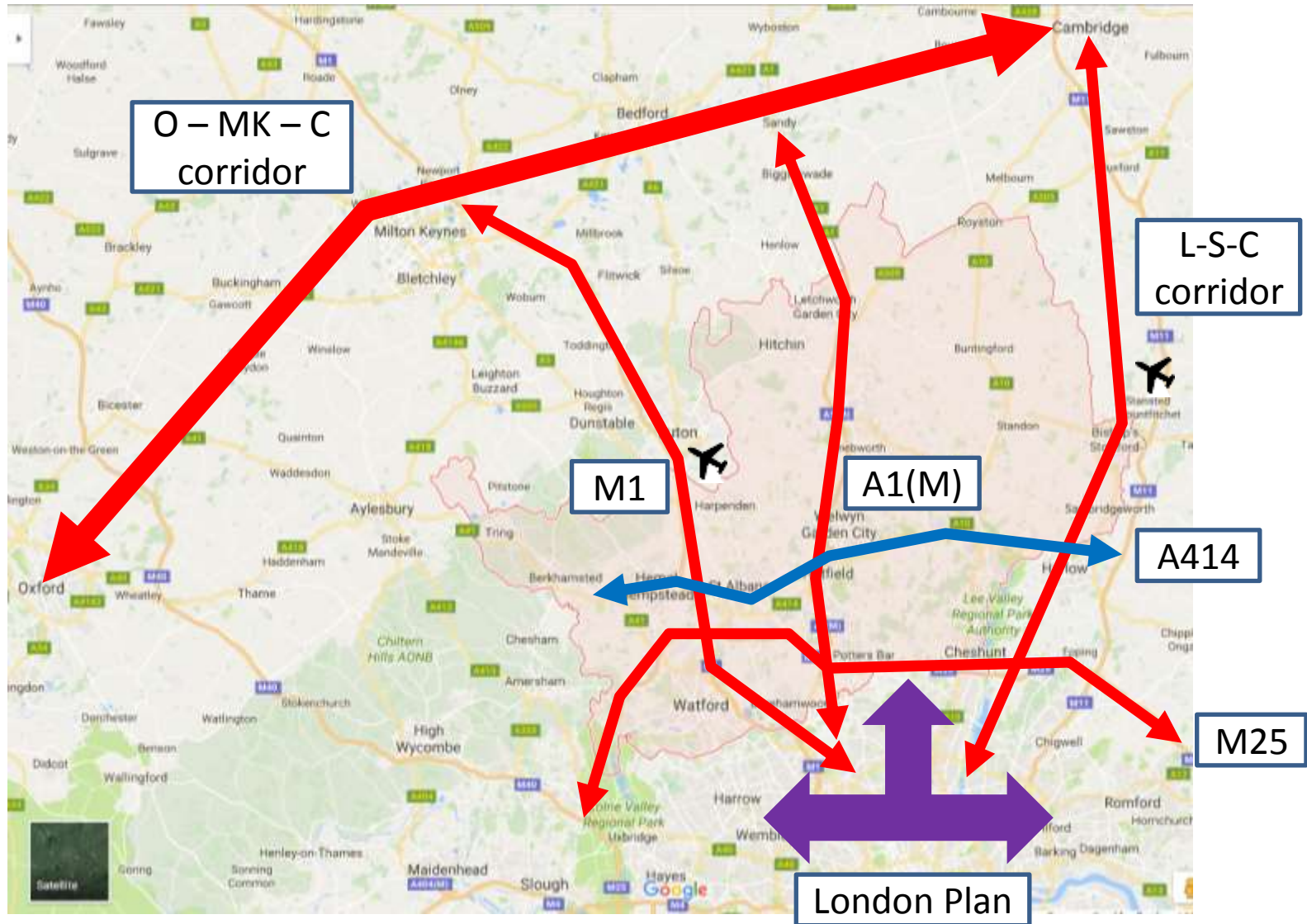
What's in it for us?



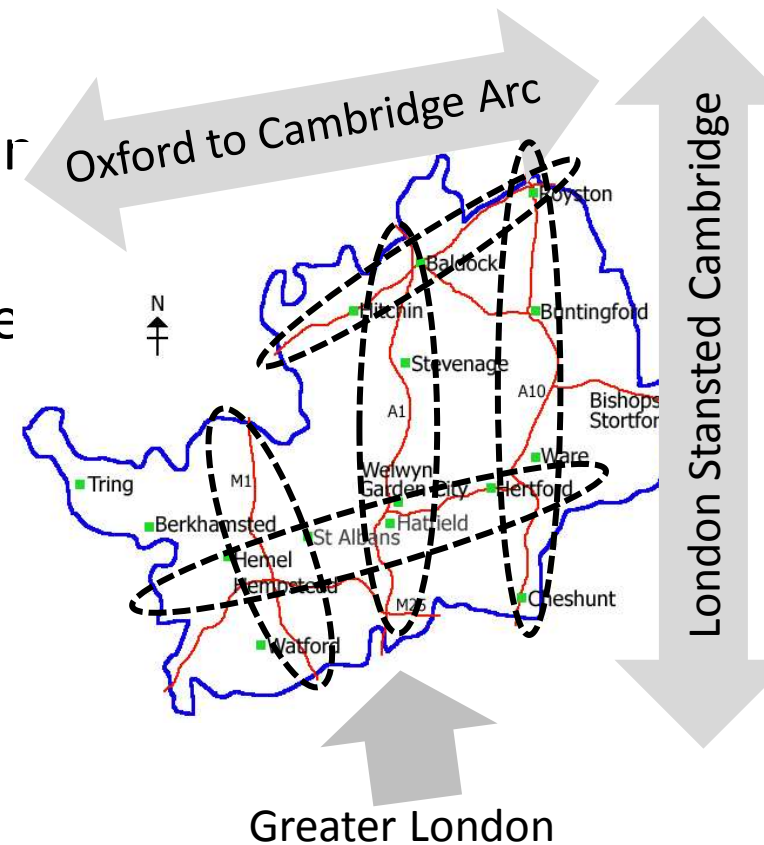
1. Cooperation for Sustainable Development Board
2. North Essex Joint Planning & Garden Communities
3. North Northamptonshire Joint Planning Unit
4. Coastal West Sussex & Greater Brighton Strategic Planning Board
5. London Stansted Corridor Consortium
6. Cambridge City Council & South South Cambridgeshire District Council
7. Kent & Medway GIF
8. Leicester Growth Plan
9. Suffolk Growth Strategy



# Growth corridors



- All current local plan programmes are different
- Differing growth pressures and geographic ‘pulls’
- Existing partnerships around common interests / corridors / sites
- Need to deal with external influence – O2C, LSCC, XR2, HS2, London growth – risk will get left behind or picked off if don’t collaborate
- Difficult to engage with statutory third parties



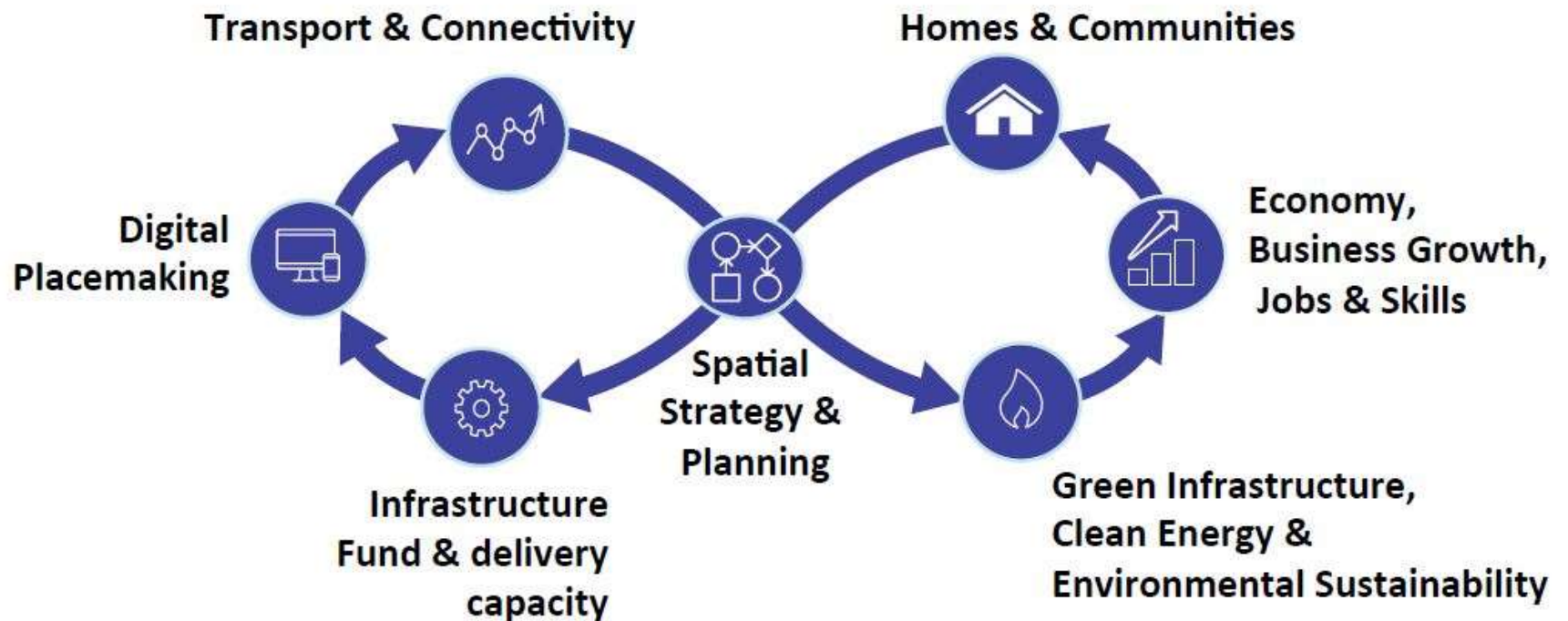


# WHAT HAPPENED

- Establishment of the Hertfordshire growth Board
- Establishment of two strategic planning areas
  - East and West
- Production of a Hertfordshire prospectus
- New role of HIPP



# A place-based growth approach – interconnected programmes of community & infrastructure delivery



**ACTION:** Place-based system view refreshed to reflect NECH strategic themes

